

# POTTERS PRESS



Kia Ora Potters,

Tena koutou katoa, here I was thinking we were winding down for the year and next minute we are busier than ever. The studio has been a busy with classes finishing up, every potter around throwing, sealing seams, paddling the profiles, and scratching to attach their pieces to get them in the kilns for that final push before Christmas. Our kiln team have been on over drive and counting down to the last firing day next week on Wednesday 18 December. The wood firing team have been working away getting the Phenox kiln ready to fire tomorrow. Thank you to everyone who has come in and donated their time to help out. That little bit of extra mess you clean up really does help 😊.



Our new water cooler is being very well used and received as a blessing by one and all. Thanks to the committee for finding the funds to make this happen.

The aprons have been flying out the door which is so cool, and I must say it is really awesome to see them being worn around the studio. 😊 We still have a few left so if you are looking for that certain gift to give a fellow potter or simply just for you. These are for sale at the office.

Don't forget this is the last week to get your summer clay from the studio. The clay cupboard is steadily emptying out, so get in quick.

Also, please do come and collect your pieces on the glazed and bisque shelves and take your amazing artworks home 😊

**Play with Clay :** Last Play with clay this year will be on Wednesday 9.30 -12.30, bring a plate and lets have a little celebration.

**Last day for Firing:** Due to the kilns running over time and a great back log of class work needing to be fired the last day to submit work for 2019 to be fired is the **16 December 2019**. The last day the kilns will be fired is the 18 December 2020 and the last day for collection will be the 20 December 2020. There are NO more private bookings available this year sorry, please do feel free to book for February 2020.

The Hamilton City Council have notified us that the Ward park carpark will be **OPEN to the Public from Sat 21 Dec – Sun 5 Jan** for public use.

As mentioned in early newsletters, Hamilton City Council are fixing our kiln room roof and replacing our gas kiln chimney. What this means is the whole venue will be **out of service** between January 6 – 17 January 2020 while works are completed.



**Windows:** Please, please, if you are the last to leave of an evening remember to check and shut the windows. There is a step ladder in the studio to use; if you too are vertically challenged 😊

## News from the Committee



## Summer working Bee Spring Clean

We are having a Christmas spring clean Friday 20<sup>th</sup> December, if you have some spare time on this day, we would really appreciate your help. Please bring along your overalls, any step ladder if you are vertically challenged like me, a sense of humour and some elbow grease.

## Christmas Shut Down

**December 22 – 18 January 2019**

**Last day for firing will be Wednesday 18 December**

**Final day for pick up will be 20 December 2019**

## Christmas Gifts and Vouchers

Are you looking for that perfect gift for that special Someone? We have a variety of gift vouchers Available to purchase from the office.  
10 -4pm Monday – Friday



Waikato Society of Potters

## Christmas Gift Voucher

NZ\$20.00 – \$50.00 and NZ\$100.00  
Code provided on purchase

## How about an Apron: *They have arrived* 🥰



We have a limited number of Waikato Society of Potters Aprons available to order for your Christmas gift.

Cost is NZ\$18 per apron. And just to brighten everyone's day there are a range of colours to: Black, Royal Blue, Light Blue, lime Green, Red, Orange and Pink.

There are a very limited number available so get in quick. Available on request at the WSP office

## Open Membership Christmas Party





## Play with Clay



The last play with Clay session for 2019 will be on Wednesday 18 December 9.30 -12.30.

Play with clay sessions will resume from the 21 January 2020 pending volunteers. If you would like to volunteer or continue volunteering, we would love to hear from you. Pop into the office and see Bea. She will pop you out some paperwork and a formal meeting invite for the dates that you are available.

**Diploma:** If you would like to learn more how to study a Diploma in ceramics with us, head along to either [www.waikatopotters.co.nz](http://www.waikatopotters.co.nz) or <https://www.op.ac.nz/study/creative/art/programmes/ceramic-arts/>.

**Last chance boxes:** Please do pop into the studio Monday – Friday 10 -4pm to collect and pieces you may be waiting for as we can now only keep these for 1 month on the shelves as we run out of room. Uncollected items will either be thrown away or reallocated to the donation box.

**Waikato Society of Potters 48<sup>th</sup> Exhibition Pieces.** Please come and collect your pieces from the studio. If your piece has been sold, you will be notified via email. I found a couple more pieces in the Dip room if you are missing yours.



### Glass Slumping for Potters

A weekend introduction to working with glass in pottery kilns with Queensland potter and glass artist, Bill Powell. Expand your creative range! Get the most out of your existing equipment. \$200 members, \$250 non-members. Learn how to:

- Slump and mould glass Make and use moulds
- Explore forming materials
- understand firing cycles and annealing
- Cut and process glass
- join glass and ceramic

### Throwing Summer School

A masterclass to take your throwing to the next level with Queensland potter, Bill Powell.

GO TALLER, GO WIDER, GO BIGGER! \$200 members, \$250 non-members.

Saturday 25 January – Sunday 26 January 2020 - 9.30am - 4pm Clay and firing extra. Only 4 tickets left.



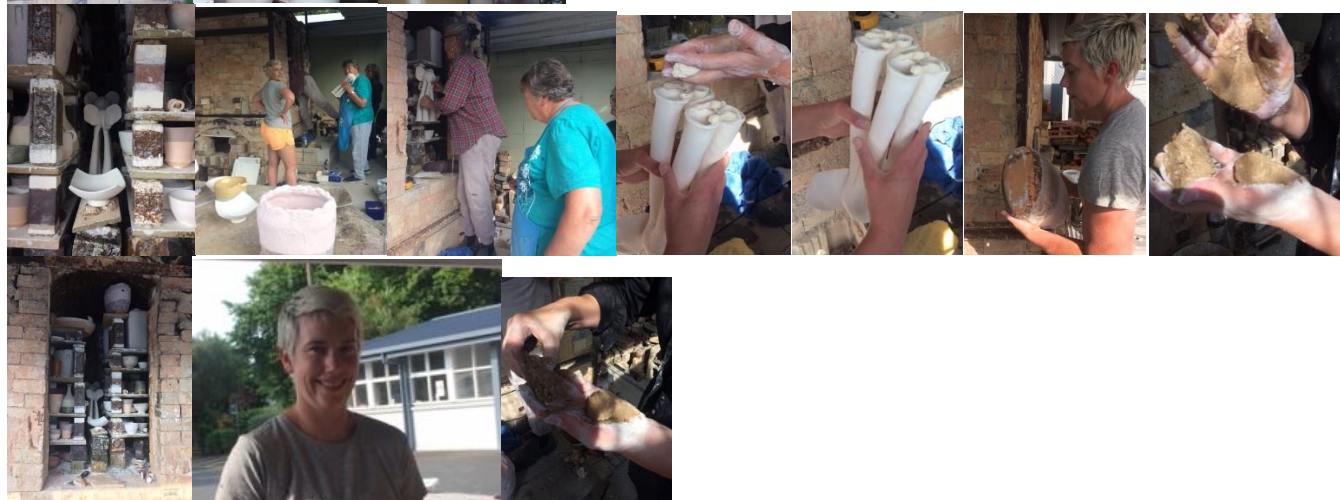
For Saturdays Play with Clay 2020

Kiln Room – Wednesdays 9.30 -12.30

Kiln Room – Fridays 9.30 – 12.30

If you have spare time and would like to volunteer email us at [manager@waikatopotters.co.nz](mailto:manager@waikatopotters.co.nz) Or pop into the office 10 - 4 Mon -Fri

**Wood Kiln Soda Firing:** This week Ginny Lane and Naomi and a team of volunteers have been working so hard doing a wood firing in the WSP Phoenix kiln. This is a mammoth task and I simply can not thank everyone enough for their efforts. What an amazing experience of community. The ladies will be opening the Kiln next Wednesday night 18 December around 6pm. Pop on down and share in the gorgeousness that is wood fired pottery.



### Raku Club

If you love things glowing and are a bit of a fire bug, then you will love our Raku club

Next Raku club day is on the **17 December 2019** from 6pm.

**Raku** refers to a type of low-firing process that was inspired by traditional Japanese **raku firing**. Waikato Society of Potters **raku** involves removing **pottery** from the kiln while at bright red heat and placing it into containers with combustible materials such as sawdust. Once the materials ignite, the containers are closed and the pots and sculptures inside get a wonderful colours or crackled lustre.



### Notes from the Kiln Room

As the weather is quite hot lately and our kilns are going flat tack, please watch your handles dry time. These dry much quicker than your pot. It is an important note to cover your handles with plastic over night to slow down the drying process and this will help the whole cup or pot dry more evenly and hopefully prevent the handles cracking. Last day for to have your work in for firing is Monday 16 December. Our last firing day will be on the 18<sup>th</sup> December with the last day for collection on the 20<sup>th</sup> December.

### PORTAGE CERAMIC AWARDS 2019

**from 22 November 2019 - 23 February 2020.**

If you are in Auckland it is well worth the veiwing



[Click here to go to the Portage page on ceramicsnz.org.](http://ceramicsnz.org)



### What's On:

We are happy to open on Saturday afternoons and Sundays for members; however we need volunteers to make this happen.

<b>Saturday 14 December</b> Play with Clay 10 -1pm - Hosted by Fenella Fern, this is the last Play with Clay Saturday for 2019 so bring a plate and enjoy  Class 12+ 13 combined – 3 - 6pm	<b>Sunday 15 December</b> <b>Closed</b>
<b>Monday 16 December</b> Class 1 9.30 -12.30 <b>Open Studio 1pm – 4pm</b> Children's class from 4 -5.30pm Sculpture – 6 -9pm	<b>Tuesday 17 December</b>  <b>Open Studio 1pm – 4pm</b> <b>Play with Clay 6pm -9pm</b>
<b>Wednesday 18 December</b> Play with Clay 9.30 -12.30 <b>Open Studio 1- 4pm</b>	<b>Thursday 19 December</b> Open Studio
<b>Friday 20 December</b> Working Bee to clean out the Kiln room and tidy the studio.	<b>Saturday 21 December</b> <b>CLOSED FOR THE SUMMER</b> <b>Merry Christmas one and all</b>





## WILHELMIINA DRUMMOND

### APERTURES

JOIN US TO PREVIEW THIS EXHIBITION  
TUESDAY 3 DECEMBER, 5.30 - 7PM  
VIEW FROM 3 - 17 DECEMBER 2019

**parnell gallery**

P 09 377 3133 E [ART@PARNELLGALLERY.CO.NZ](mailto:ART@PARNELLGALLERY.CO.NZ)  
263 PARNELL ROAD | PARNELL | AUCKLAND  
[PARNELLGALLERY.CO.NZ](http://PARNELLGALLERY.CO.NZ)

### 60th CANZ NATIONAL EXHIBITION

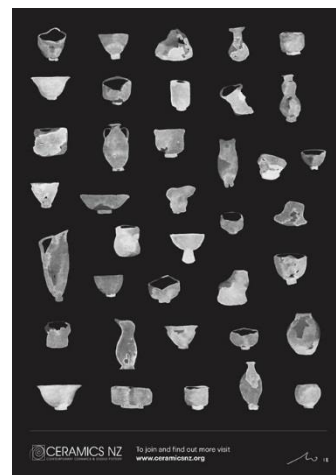
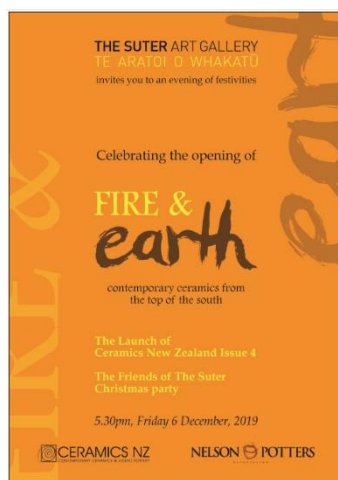
Ah, it's this time of year again, the silly season is upon us. Finishing orders, stocking the shelves, getting the festive season organised until finally Christmas is come and gone and in the long awaited holidays you have time for relaxation.

Our team which is preparing the 60th National Exhibition is steadily working on the preparations for this milestone exhibition. So while you are on your vacation and think about next year's events I wish to draw your attention to it. We are planning much more than the exhibition and without giving away all the details now you will be treated to ceramic shows in other galleries around the city, demos or workshops, etc. All this to make your trip to Dunedin a memorable experience. Your perfect Labour Weekend get away!

Have I mentioned that only in Dunedin you will be able to see the Royal Albatross on the Otago Peninsula, the endangered Yellow Eyed Penguin (this year's winner of the Bird of the Year Competition), the beautiful flowers of Spring and so much more? Ceramic highlights and Nature all in one convenient package, what more could one ask for?



## A word from Ceramics New Zealand



### Coming up in 2020!

The **Ceramics NZ Tableware Exhibition** will be happening in mid-year in Christchurch. Building on the Pescadores Tableware show of 2018, organisers in Canterbury are busy putting together a fantastic event. Definitely something to prepare for over the coming months.

The **60th National Exhibition** will be held at the Otago Art Society in the historic Dunedin Railway Station from October 23rd - November 14th. This is a milestone exhibition for Dunedin as the very first 'New Zealand Made' pottery exhibition was held at the Otago Museum in 1957. We also have plans underway for our next **Touring Potter Programme** scheduled for later in the year. Keep an eye on our website, Facebook page and Instagram for more announcements.

### Renewals

Our subscription year runs from January to December so start sending through your renewals for 2020 this month. You can join, renew or purchase as a gift online at <https://www.ceramicsnz.org/AboutNZP/JoinCeramicsNZ.cfm> or by contacting me directly [secretaryceramicsnz@gmail.com](mailto:secretaryceramicsnz@gmail.com). Please get in touch if you have any questions about your membership.

Individual Membership - \$40

Magazine Subscription - \$35

Individual Membership + Magazine Subscription - \$75

Student Membership - \$20

Club Membership - \$30 base fee + \$2 per club member levy

**Otago/Southland - [Nicole Koliq](#)**

We hope you will come to Dunedin and experience this city's vitality and our Southern Festival of Ceramics and we look forward to welcome you here. I wish you all a very Merry Xmas and a prosperous Happy New Year.

### What's On ...

- "Quarry Arts - Summer Do" - Whangarei
- "Festival of Pots & Garden Art" - Anam Cara Gardens, 150 Rangiu Rd, Otaki
- "Fire & Earth - Contemporary Ceramics from the Top of the South" - Nelson
- "Halswell Pottery Group - Xmas Sale" - Halswell, Christchurch
- "60th CANZ NATIONAL EXHIBITION" Otago/Southland
- "12th International Ceramics Competition - Mino, Japan" - Japan (International)

[Click here for more information about all of these events](#)



# POTTERY WORKSHOPS FOR 2020



**Rahu Rd  
Pottery**

142 Rahu Road, Paeroa  
07 8626974, 021 02388967  
[www.rahuroadpottery.co.nz](http://www.rahuroadpottery.co.nz)  
[info@rahuroadpottery.co.nz](mailto:info@rahuroadpottery.co.nz)

Hosted by Rahu Road Pottery this workshop series will be an immersive experience, teaching a combination of both the how and the why of making.  
Tutor: Duncan Shearer

## ***Taming of the kiln***

**Date: 18 & 19 April, all day**

This workshop is all about heat and how to control it. Based around loading and firing of our wood kiln for a soda firing we will also be covering the principles at work in wood fired kilns. Maximum 6 people, \$320 (includes refreshments and lunches)

## ***Mastering woodfiring effects***

**Date: 26 & 27 September, all day**

A more advanced workshop to the earlier 'Taming of the Kiln' workshop that is more focussed on you developing an individual approach and aesthetic to woodfired soda glazing. Maximum 6 people. \$320 (includes refreshments and lunches)

## ***Throwing lidded forms***

**Date: 21 March, 9am to 4pm**

A one day intensive course that explores lids and galleries. Duncan will demonstrate a range of techniques and forms that you will then have a go at making. We will be using the Leach treadle wheel. Maximum of 4 people. \$160 (includes refreshments and lunch)

## ***Glaze technology - introduction***

**Date: 23 May 2020, 9am to 4pm**

This course covers glazing methods including tools, spraying and resists. We will also cover a basic overview of the materials that make up a glaze and what to look for in a new glaze recipe. Maximum 6 people. \$160 (includes refreshments and lunch)

## ***Glaze technology - intermediate***

**Date: 27 June, 9am to 4pm**

This course is focussed on understanding what materials are used in making up a glaze, how to formulate a recipe and test it and how to take an existing glaze and make it your own by adapting it to your clay and style. Maximum 6 people. \$160 (includes refreshments and lunch)

## ***Glaze technology - advanced***

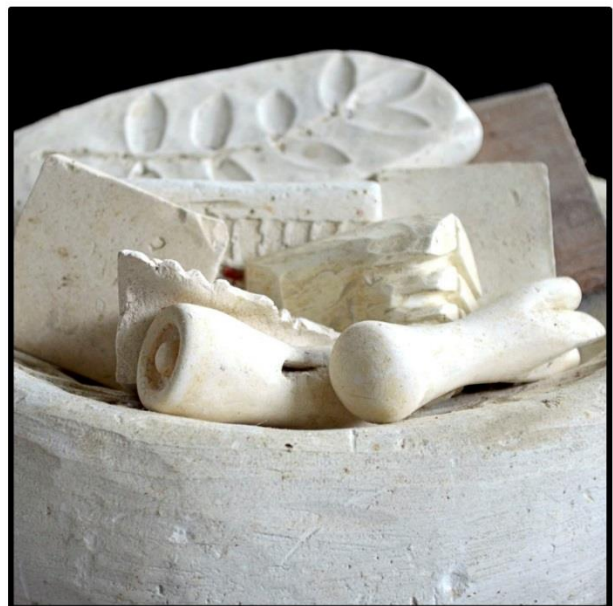
**Date: 22 August, 9am to 4pm**

Delve into the chemistry that sits behind the materials we use in glazes. This course is focussed on understanding Unity Molecular Formula and how that applies to your glazes. Maximum 6 people. \$160 (includes refreshments and lunch)

## ***Adding the details***

**Date: 24 October, 9am to 4pm**

This workshop looks at how important the finishing details are in resolving your work. Handles, lugs, stamps, textures all play an important part in developing your style and can help the functionality of your work as well. Maximum of 4 people. \$160 (includes refreshments and lunch)



**For more information please visit our website.**

## A word from the team at Decopot

The Decopot Team will start a well-earned break from the 20th December and return to work on the 13th January 2020.

Many of you will have used and enjoyed the new Primo-Pro European Blended clays. We are pleased to report fantastic response to our first release of these materials and for those who missed out or would like more, we have containers arriving in December and January stuffed full of your favourite clays.

Have a wonderful safe summer and Merry Christmas From the Decopot Team, and Paul, Wendy and the team look forward to working with us all again in 2020.



## A word from Creative Waikato

### *Events calendar*

#### **Hamilton**

[Storytelling in the Gallery](#) | **Literature** | Dec 12

[Kirikiriroa Non-Fictions: Curator's Talk](#) | **Visual art & photography** | Dec 14

[ArtsPost Gallery Talk and Artist in Residence Session 2](#) | **Visual art & photography** | Dec 15

[An Evening In with Ruby Lyon](#) | **Theatre & dance** | Dec 16

[Tuesday Tasty Tunes in Garden Place - Christmas Special](#) | **Music** | Dec 17

[Guy Williams "Some Places" Tour 2019 Extra Show](#) | **Theatre & dance** | Dec 17

[Choir with Benefits Tron City Christmas Sing](#) | **Theatre & dance** | Dec 18

[The Improv Show Before Christmas](#) | **Theatre & dance** | Dec 19

[Join us for our final exhibition of 2019](#) | **Visual art & photography** | Nov 27 - Dec 21

[Christmas Music with the Cambridge Brass Quintet](#) | **Music** | Dec 22

[Christmas at the Gallery](#) | **Visual art & photography** | Nov 1 2019 - Jan 10 2020

---

### **Extended Events**

#### **Hamilton**

[Cowboy Christmas](#) | **Theatre & dance** | Nov 16 - Dec 14

[Plumbum](#) | **Visual art & photography** | Nov 23 - Dec 20

[Join us for our final exhibition of 2019](#) | **Visual art & photography** | Nov 27 - Dec 21

#### **Morrinsville**

[Toi Iti](#) | **Visual art & photography** | Nov 30 2019 - Dec 20

#### **Te Aroha**

[Future Te Aroha: Once Upon a Christmas Experience](#) | **Festivals** | Dec 3 - Dec 16

#### **Whangamata**

[Big Arts Day Out 2020](#) | **Craft & object** | Jan 9 - Jan 11 2020



## Final Word

2020 Classes are now available for booking via <https://www.eventspronto.co.nz>. [Events Pronto - Waikato Potters](#)

Important Dates and Events for 2020
Open Day – 14 November
Garden Party – 5 April
Exhibition – 30 October – 30 November
Dip Celebration – 6 November
AGM – 28 April

# DATES TO REMEMBER

## Term 1, 2020 Courses

### Class 1: Wheel thrown pottery for all.

Join Alex to learn the age-old skill of throwing pottery on the wheel. Learn the basics to make cups, bowls, dishes and much more. Beginners welcome, or practice what you have already learned elsewhere.

\$180 non-members - \$160 members Clay and firing extra.

**Monday mornings** 09.30-12.30 for 8 weeks 10 February - 30 March 2020

**Event Link:** <https://www.eventspronto.co.nz/event2063>

### Class 2: Pottery Sculpture for all with Susan

A Sculpture class for all. Learn how to build, sculpt and manipulate clay into works of art. Susan St Lawrence, a highly awarded potter, will guide you through the essence of sculpture. Working with you to create your own creative voice. Susan St Lawrence. <http://www.susanstlawrenceceramics.com/>

**Monday evenings, 6-9pm** for 8 weeks: 10 February - 30 March 2020

Tickets \$180 (members \$160) Plus clay and firing costs.

**Event Link** <https://www.eventspronto.co.nz/kiosk?id=3156>

### Class 3: Beginners Hand Building with Yasmin

Experience the joy of hand building pottery, learn about clay, and what can be made through hand building. Local potter, Yasmin Davis will introduce you to our world and show you the magic of hand building with clay.

**Tuesday Mornings:** 9.30am - 12.30pm 11 February - 31 March 2020 (8 weeks)

\$180 (\$160 members) + the cost of materials & firing.

**Event Link** <https://www.eventspronto.co.nz/event909>

### Class 4: Wheel Throwing Projects

Discover the wonders of wheel-thrown pottery. A general wheel throwing class designed to teach beginners the joy of throwing pottery on the wheel.

**Wednesday Evenings:** 12 February - 1 April 2020 - 6.00pm - 9.00pm

\$180 (\$160 members) + the cost of materials & firing. Payments for materials & firing can be paid at the society and will be determined on usage.

**Event Link** <https://www.eventspronto.co.nz/event910>

### Class 5: Pottery with Jenni

An excellent class that covers both hand-building and wheel throwing. Suitable for all skill levels. Join Jenni Taris is a very gifted and expert potter to find your artistic voice, in a welcoming and entertaining class exploring clay.

**Thursday Mornings:** 9.30am - 12.30pm - 13 February - 2 April 2020 (8 weeks)

\$180 (\$160 members) + the cost of materials & firing. Payments for materials & firing can be paid at the society and will be determined on usage.

**Event Link** <https://www.eventspronto.co.nz/event915>

#### **Class 6: Clay Creations for all**

A relaxed class with our very experienced tutor Jenny Taris. The class covers both hand-building and wheel throwing and is designed to help you develop and explore your own creative voice.

Thursday Afternoons: 1pm - 4pm 13 February - 2 April 2020. (8 weeks)

\$180 (\$160 members) + the cost of materials & firing. Payments for materials & firing can be paid at the society and will be determined on usage.

**Event Link** <https://www.eventspronto.co.nz/event916>

#### **Class 7: Term 1 2020. Hand building with Diane**

A rare opportunity to learn from a well renowned artist. Diane specialises in hand building and loves to share her wealth of knowledge about clay. No matter what your level or experience, Diane will guide you through the mystic and therapeutic journey of hand building with clay. You will be making amazing projects to beautify your home and garden.

This is a mixed class - beginners will have set projects and more experienced learners will undertake self-directed learning with supervision from Diane.

Thursday evenings 13 February – 2 April 2020 (8 weeks).

\$180 (\$160 members) Thursday evenings 6.00 - 9.00 pm for 8 weeks.

**Event Link** <https://www.eventspronto.co.nz/event948>

#### **Class 8: Term 1 2020 Intro to Pottery**

An introduction to making hand-built pottery, wheel-thrown pottery, glazing and firing in our raku (oil drum) kiln. Join WSP Kiln Technician, David Kenny for a 5-week course in the basics of making pottery. A great foundation in all the main techniques, with a real firing at the end! David is an experienced potter, who regularly teaches beginners at Ngaruawahia, Te Kauwhata and Te Awamutu.

Friday Evenings: 6.00pm - 8.00pm 31 January - 28 February 2020 (5 weeks)

\$120 (\$100 members) + the cost of materials & firing. Payments for materials & firing can be paid at the society and will be determined on usage.

**Popular course - please pay to secure your place.**

**Event Link** <https://www.eventspronto.co.nz/event913>

#### **Class 9: Children's Class Term 1 2020**

Afterschool programme: Let your child experience the joy of playing with clay. Children will learn all about clay, the fun things that can be made with it and create art works to take home!

For 7-13-year olds (Parent/guardians welcome.)

Tuesday afternoons 5 - 6.30pm 18 February - 24 March 2020 (6 weeks)

**Event Link** <https://www.eventspronto.co.nz/event911>

#### **Class 10: Term 1 2020. Throwing Taster Sessions.**

Have you always wanted to try throwing pottery on the wheel? Not sure whether you'll like it? Total beginners welcome to this gentle Sunday afternoon class. The Throwing Taster Sessions are a short 5-week course that will set you up for one of our longer courses next term. Also makes a great present.

Sunday 2 February - 1 March 2020 (5 weeks) \$120 non members - \$100 members.

Clay and firing are extra - Bring your own apron and towel please.

**Throwing courses are very popular - payment will secure your place.**

**Event Link** <https://www.eventspronto.co.nz/event912>

#### **Class 11 - Young Adults - Term 1 2020**

This class is a wonderful opportunity to learn all about clay, experience throwing clay on the wheel or hand building your next masterpiece. Join Alex Wilkinson, a young and vibrant potter whose creativity and knowledge of pottery is outstanding.

For 15-21-year olds (Parents or guardians welcome.)

Wednesday afternoons 4pm-5.30pm 19 February - 25 March 2020 (6 weeks)

\$150, includes clay & firing. **Event Link** <https://www.eventspronto.co.nz/event951>



**Play With Clay 2020**

Tuesday's evenings starts back 21 January 2020. 18.30 - 21.00 Ongoing.

Level: Not tutored: all levels welcome.

Host: Margaret Raine

Cost: \$10 per session (\$5 with concession)

**Play With Clay**

Wednesdays 09.30-12.30. Starts back on 22 January 2020. Ongoing.

Level: all levels welcome.

Tutor: Yasmin Davis

Cost: \$10 per session (\$5 with concession)

**Play With Clay**

Saturday 10.00-13.00 Ongoing. Starts back on 1 February 2020

Level: Not tutored: all levels welcome.

Volunteer Host

Cost: \$10 per session (\$5 with concession)

If you would like to keep updated with what's going on at the studio, please do join us on Facebook, Instagram and LinkedIn. We will be live streaming interesting happenings from the studio.

Have a wonderfully potty weekend and week ahead.

Nga mihi nui,

Waikato Society of Potters